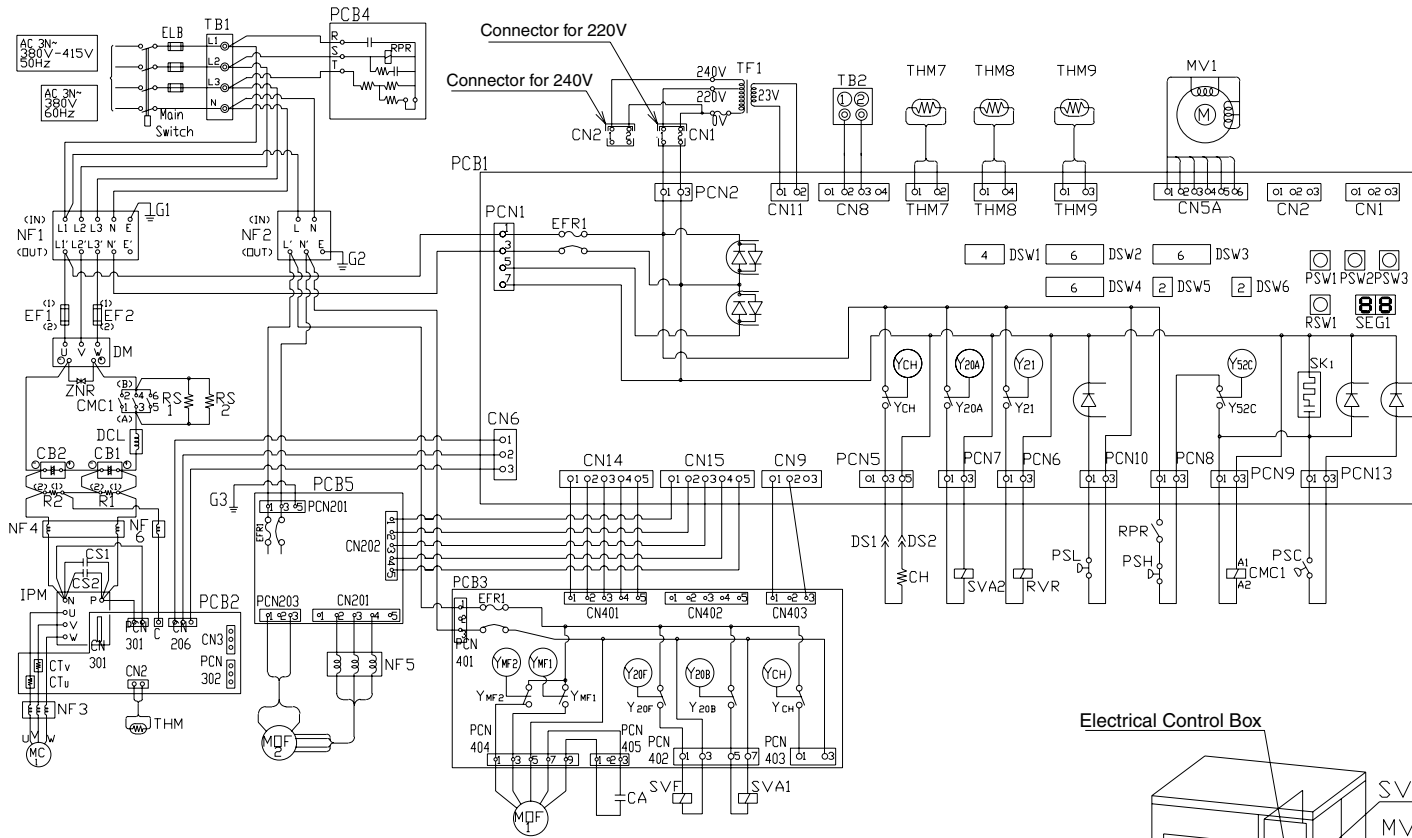
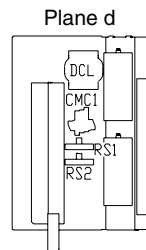
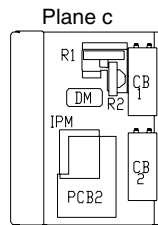
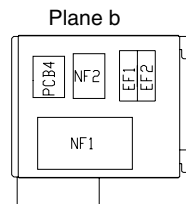
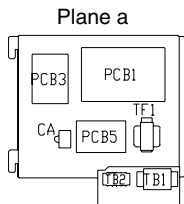
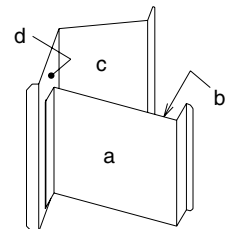


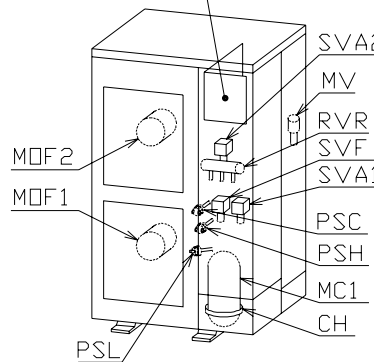
SCHALTPLAN RAS-(8-12)HRNM



Electrical Control Box



Electrical Control Box



Mark	Part Name
CA	Capacitor
CB1.2	Capacitor
CH	Crankcase heater
CMC1	Contact for compressor motor
DCL	Reactor
DS 1.2	I.F Connector
DM	Diode module
DSW1~6	Dip switch on PCB1
EF1.2	Fuse
IPM	Inverter system power module
MC1	Motor for compressor
MOF1.2	Motor for outdoor fan
MV1	Micro-computer control expansion valve
NF1~6	Noise filter
PCB1~5	Printed circuit board
PSC.PSL	Pressure switch for control
PSH	High pressure switch for protection
PSW1~3	Push switch on PCB1
RS1.2	Resistor for starting
R1.2	Resistor
RVR	Reversing valve relay
SVA1.A2	Solenoid valve for hot gas bypass
SVF	Solenoid valve for hot gas bypass
TB1.2	Terminal board
TF1	Transformer
THM	Thermistor for fin temperature
THM 7~9	Thermistor
ZNR	Surge absorber